

# THE **BASIC BAND** BOOK

by Mr. Glynn

## **FLUTE**

YOU ARE CREATIVE  
YOU ARE A MUSICIAN  
YOU CAN DO THIS

THIS BOOK BELONGS TO \_\_\_\_\_



for helpful videos, go to:

**[www.BasicBand.info](http://www.BasicBand.info)**



The contents of this book are licensed under a  
Creative Commons Attribution-NonCommercial 4.0 International License.

# FLUTE BASICS

Use the online videos listed with each topic to help you at home.  
[www.BasicBand.info](http://www.BasicBand.info)

## EMBOUCHURE

- Say the letter “M”
- Edge of the hole on lip-skin line
- Blow straight across like whispering “pooh”
- Use fast air

– Flute Video Lesson 1 –



## HOLDING

- Left palm facing you
- Fingers always stay on the keys

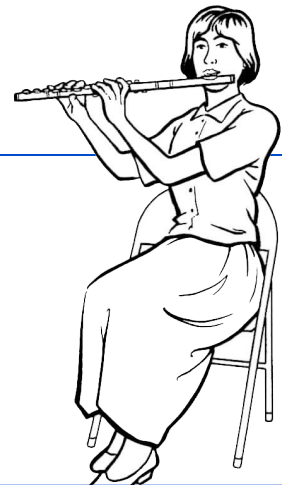
– Flute Video Lesson 4 –



## PLAYING POSITION

- Turn to the left
- Tilt your head slightly to the right
- Elbows up and out in front of you
- Shoulders relaxed

– Flute Video Lesson 5 –



## BREATHING

- in on “OH” out on “TOH”
- Never stop the air
- Stop your sound by breathing in

**OH**  
**TOH**

## TONGUING

- Say “TOO”
- Tongue goes against the back of your top teeth.

**TOO**

– Flute Video Lesson 8 –

## TONE QUALITY

- Play on the head joint only covered and uncovered
- The tone should be an **A**
- Use a tuner or piano

**A**

# THE **MUSICAL** ALPHABET

Online Video Lessons for Everyone  
[www.BasicBand.info](http://www.BasicBand.info)

FORWARDS →

E F G A B C D E F G A B C

← BACKWARDS

A B C D E F G F E D C B A

## Q & A

---

- 1) What letter comes after **G** ?
  
- 2) When we move *forwards* in the alphabet, does the sound go up or down?
  
- 3) When we move *backwards* in the alphabet, does the sound go up or down?

## PENCIL GAMES

---

*WITHOUT looking at the previous page, fill in the missing letters:*

*forwards:*

1) **A** \_ \_ **D** \_ \_ \_ \_ **C** \_ \_

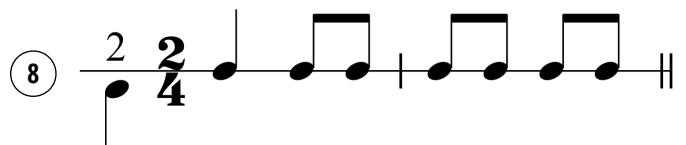
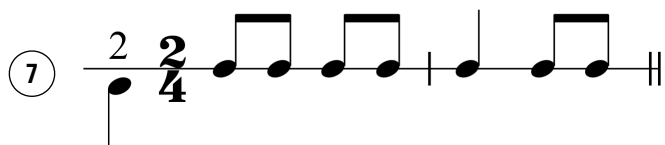
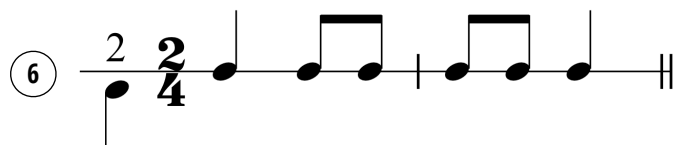
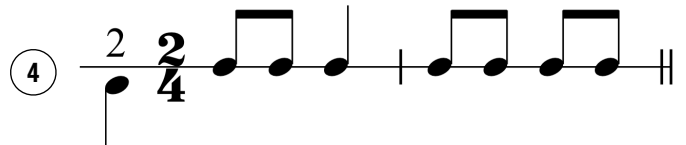
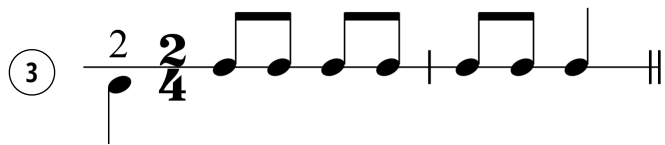
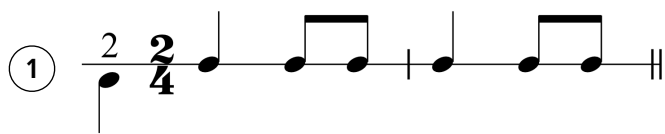
2) **E** \_ \_ \_ **B** \_ \_ \_ **F** \_ \_ \_

*backwards:*

3) **C** **B** \_ \_ **F** \_ \_ \_ **A** \_ \_

4) **F** \_ \_ \_ \_ **G** \_ \_ \_ **C** \_

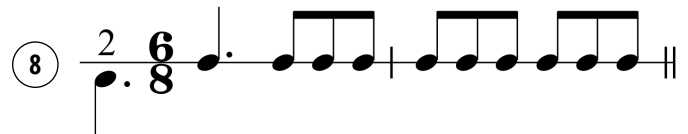
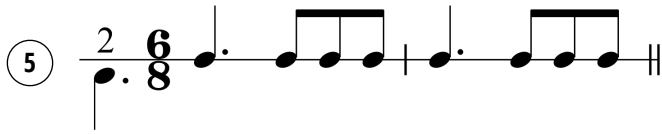
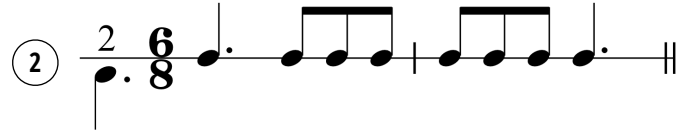
# DUPLE RHYTHM PATTERNS



Be expressive when performing with your voice and with your instrument!



# TRIPLE RHYTHM PATTERNS



Be expressive when performing with your voice and with your instrument!

LEFT HAND



RIGHT HAND



PINKY



THUMB



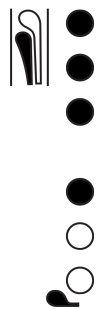
Flute Video Lesson 7  
www.BasicBand.info

# FIRST FIVE NOTES



**F**

SO



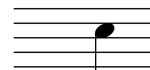
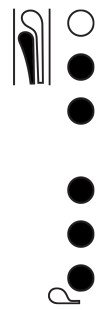
**E<sup>b</sup>**

FA



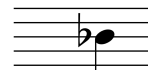
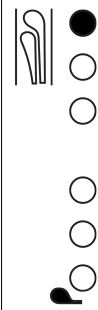
**D**

MI



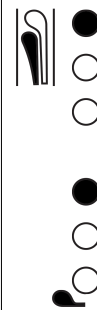
**C**

RE



**B<sup>b</sup>**

DO



# B<sup>b</sup> MAJOR SCALE

**B<sup>b</sup> = DO**

(concert Bb)

TI	<b>DO</b>	RE	MI	FA	SO	LA	TI	<b>DO</b>
	B <sup>b</sup>							B <sup>b</sup>

# DUPLE SONGS

## HOT CROSS BUNS

MI RE **DO** (rest) | MI RE **DO** (rest) | **DO-DO-DO-DO** RE-RE-RE-RE | MI RE **DO** (rest) |

## MARY HAD A LITTLE LAMB

MI RE **DO** RE | MI MI MI (rest) | RE RE RE (rest) | MI SO SO (rest) |

MI RE **DO** RE | MI MI MI (rest) | RE RE MI RE | **DO** ----- |

## GO TELL AUNT RHODIE

MI ----- MI RE | **DO** ----- **DO** (rest) | RE ----- RE FA | MI RE **DO** (rest) |

SO ----- SO FA | MI ----- MI (rest) | RE FA MI RE | **DO** ----- |

### LIGHTLY ROW

SO MI MI (rest) | FA RE RE (rest) | **DO** RE MI FA | SO SO SO (rest) |  
SO MI MI (rest) | FA RE RE (rest) | **DO** MI SO SO | **DO** ----- |

### AU CLAIRE DE LA LUNE

**DO DO DO** RE | MI ----- RE (rest) | **DO** MI RE RE | **DO** ----- |

### TWINKLE LITTLE STAR

**DO DO** SO SO | LA LA SO (rest) | FA FA MI MI | RE RE **DO** (rest) |  
SO SO FA FA | MI MI RE (rest) | SO SO FA FA | MI MI RE (rest) |

### SKIP TO MY LOU

MI MI-MI **DO-DO-DO** | MI MI SO (rest) | RE RE-RE TI-TI-TI | RE RE FA (rest) |  
MI MI-MI **DO-DO-DO** | MI MI SO (rest) | RE MI-FA MI RE | **DO** ----- **DO** (rest) |

# TRIPLE SONGS

## ROW YOUR BOAT

**DO** - - | **DO** - - | **DO** - RE | MI - - | MI - RE | MI - FA | SO - - | - - - |  
**DO DO DO** | SO SO SO | MI MI MI | **DO DO DO** | SO - FA | MI - RE | **DO** - - | - - - |

## RING AROUND THE ROSEY

SO - SO | MI - LA | SO - - | MI - - | SO - SO | MI - LA | SO - - | MI - - |  
SO - - | MI - - | SO - - | MI - MI | SO - - | SO - - | **DO** - - | - - - |

## FARMER IN THE DELL

**DO** - **DO** | **DO** - **DO** | **DO** - - | - - RE | MI - MI | MI - MI | MI - - | - - - |  
SO - - | SO - LA | SO - MI | **DO** - RE | MI - MI | RE - RE | **DO** - - | - - - |

### POP GOES THE WEASEL

**DO** - **DO** | RE - RE | MI SO MI | **DO** - SO | **DO** - **DO** | RE - FA | MI - - | **DO** - - |  
**DO** - **DO** | RE - RE | MI SO MI | **DO** - - | SO - - | RE - FA | MI - - | **DO** - - |

### THE ITSY-BITSY SPIDER

| **DO** - **DO** | **DO** - RE | MI - - | MI - MI | RE - **DO** | RE - MI | **DO** - - | - - - |  
MI - - | MI - FA | SO - - | SO - - | FA - MI | FA - SO | MI - - | - - - |  
**DO** - **DO** | **DO** - RE | MI - - | MI - MI | RE - **DO** | RE - MI | **DO** - - | SO - SO |  
**DO** - **DO** | **DO** - RE | MI - - | MI - MI | RE - **DO** | RE - MI | **DO** - - | - - - |

### THREE BLIND MICE

MI - - | RE - - | **DO** - - | - - - | MI - - | RE - - | **DO** - - | - - - |  
SO - - | FA - FA | MI - - | - - - | SO - - | FA - FA | MI - - | - - SO |  
**DO** - **DO** | TI LA TI | **DO** - SO | SO - SO | **DO** - **DO** | TI LA TI | **DO** - SO | SO - SO |  
**DO** - **DO** | TI LA TI | **DO** - SO | SO - FA | MI - - | RE - - | **DO** - - | - - - |

# CHROMATIC SCALE

<b>F</b>	<b>F#</b> OR <b>G<sup>b</sup></b>	<b>G</b>	<b>G#</b> OR <b>A<sup>b</sup></b>	<b>A</b>	<b>A#</b> OR <b>B<sup>b</sup></b>
					

<b>b</b> flat makes a note <b>lower</b>	<b>#</b> sharp makes a note <b>higher</b>
--	--



B	C	C# OR D <sup>b</sup>	D	D# OR E <sup>b</sup>	E	F

### ALWAYS REMEMBER

- The **Chromatic Scale** is when you play every note on the instrument, in order, up or down.
- When you go up, use sharps (#). When you go down, use flats (b).
- It can start and end on any note.



